



8th Hellenic National Conference of Steel Structures

Scientific Committee

Avdelas Aris	Professor, AUTH
Avraam Tasos	Lecturer NTUA
Vayas Ioannis	Professor, NTUA
Vamvatsikos Dimitrios	Lecturer, NTUA
Galousis Evangelos	Professor, DUTH
Gantes Charis	Professor, NTUA
Ermopoulos Ioannis	Professor, NTUA
Efthimiou Evangelos	Lecturer, AUTH
Thomopoulos Kimon	Professor, AUTH
Ioannidis George	Professor, NTUA
Karavasilis Theodoros	Assoc. Prof, Warwick Un.
Kalfas Christos	Assoc. Prof., DUTH
Karamanos Antonios	Civil Engineer
Karamanos Spiros	Assoc. Prof, Un. of Thessaly
Karydakis Phaeton	Dr. Civil Engineer
Koltsakis Efthimios	Ass. Professor, AUTH
Lignos Dimitrios	Ass. Professor, McGill Un.
Baniotopoulos Charalampos	Professor, AUTH
Bisbos Christos	Professor, AUTH
Mystakidis Evripidis	Professor, Un. Of Thessaly
Palamas Ioannis	Dr. Civil Engineer
Raftoyiannis Ioannis	Ass. Professor, NTUA
Sofianopoulos Dimitrios	Ass. Prof. Un. of Thessaly
Tzourmakliotou Dimitra	Ass. Professor, DUTH
Christopoulos Konstantinos	Professor, Toronto Un.

Organizing Committee

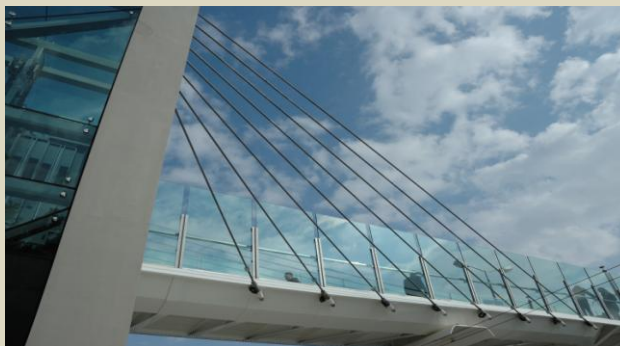
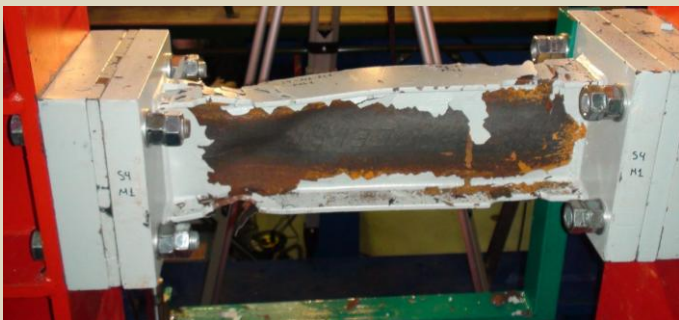
Ioannidis George	President SSRS
Tsioli Charikleia	President TChGr Peloponese section
Karydakis Phaeton	Gen, Secretary SSRS
Avgerinou Stella	Civil Engineer NTUA
Dasiou Maria-Eleni	Civil Engineer NTUA
Davlanti Georgia	Civil Engineer NTUA
Sarantopoulos Vasilis	Civil Engineer NTUA
Spiliopoulos Andreas	Civil Engineer UoP
Smyrniotis Ioannis	Mayor of Tripoli

Tripoli (Greece) 2 – 4 October 2014



Organized by
STEEL STRUCTURES RESEARCH SOCIETY (SSRS)
and
**TECHNICAL CHAMBER OF GREECE,
PELOPONESE SECTION**

First announcement



Main Topics

- ☑ Original research papers in the broader area of steel and composite structures.
- ☑ Strength, stability, fatigue.
- ☑ Connections.
- ☑ Aseismic design and dynamic response of steel and composite structures.
- ☑ Innovations in design, manufacturing and erection of steel and composite structures.
- ☑ State of the art projects (residential and office buildings, industrial facilities, bridges, drilling platforms, masts, towers, tanks and silos, chimneys, thin walled structures, large span structures, sports facilities, special projects).
- ☑ Fire behavior and design.
- ☑ Sustainability of steel structures.
- ☑ Codes.
- ☑ Steel and Architecture.

Paper submission

All participants wishing to contribute to the scientific program by presenting one or more papers are invited to submit an abstract of not more than 250 words, to the organizing committee, by **January 15, 2014**.

The abstract must include the scope of the paper, the state of the art and the expected results. Notification of the abstract acceptance will be sent by **February 15, 2014**.

The full version of the paper must be submitted by **May 31, 2014** and the final acceptance by the scientific committee will be completed by **June 30, 2014**, in order for the paper to be included in the conference proceedings.

The conference will include as invited and key note speakers acknowledged international scientists who will present their current research in selected fields in steel and composite constructions.

Paper presentations will be in Greek (with an English summary) or in English (with a summary in Greek).

Participation fee: **100 €**
(for students: **60 €**).

Conference internet site:

<http://eeme.ntua.gr>

E-mail,

Abstract and final paper submission:

eeme@mail.ntua.gr

Enquiries:

Dasiou Maria-Eleni

Avgerinou Stella

e-mail: eeme@mail.ntua.gr

tel.: + 30 210 7722554

fax: + 30 210 7723442